

Voices of Visions

FIRST NATION & INUIT RESOURCES EDITION

Spring 2017

Granada Gold

Drill rigs find significantly more gold

David Suzuki

Citizen science and genetic testing yield positive results

Red Cross

Helping people prepare and deal with flooding



Voices of Visions
Publications

www.voicesofvisions.com

GGM
GRANADA
GOLD MINE

Northern Ontario's leading supplier of concrete products and services



Concrete

Ready Mix concrete for Sudbury, Sault Ste. Marie, ThunderBay and Northern Ontario

Construction

Bagged cement & restoration products for every project

Residential

Landscaping products that will give your home a distinct look

Sand & Gravel

We offer a full range of aggregate products like sand, gravel, and slag

Blocks

Concrete blocks for your residential, commercial or industrial project

Precast

Heavy duty and decorative concrete wall barriers

Sandblasting

Products and equipment for all your sandblasting needs

Sudbury - (705) 674-4291 Sault Ste. Marie - (705) 541-2345 Thunder Bay - (807) 345-5777

www.fisherwavy.com

**Co-Publisher
Editor-in-Chief**

Francois Beaudin

**Art Director,
Design and Production**

Wayne Wahab

Advertising Manager

Nora Campbell

Contributing Writers

Jennifer Ouellette

David Suzuki

Krista Lamb

Rory Butler

Cynthia Wesley-Esquimaux

Circulation

1-613-491-0406

in this issue



- 4 Granada Now is One of the Largest Gold Deposits
- 6 GIN-COR is Going Nationwide
- 9 Red Cross Helping People Prepare & Deal with Flooding
- 11 Osisko Mining - Leading Gold Exploration Company
- 14 Your. Life. Counts. – What We do is in Our Name.
- 16 Canada 150 and Where are the Children?
- 18 CEMI All-season Transportation in the Far North
- 20 Tarku Resources
- 22 Nemaska Lithium Alongside the Cree Community
- 24 Focus Graphite
- 26 Margaux Resources Makes Difference in Kootenay Arc
- 27 Perry Bellegarde AFN National Chief
- 28 David Suzuki Citizen Science and Genetic Testing
- 30 Diabetes Canada - Food Skills for Families
- 32 Northern Sphere Mining Corp.

Voices of Visions is distributed free, all right reserved. Contents and photographs may not be reprinted without written permission. The statements, opinions and points of view expressed in articles published in this publication are those of the authors. The publisher accepts no responsibility for unsolicited material.

SUBSTANCE ABUSE CENTRES

**Canadian
Treatment
Services:**

[www.ccsa.ca/Eng/KnowledgeCentre/
OurDatabases/TreatmentServices/Pages/
default.aspx](http://www.ccsa.ca/Eng/KnowledgeCentre/OurDatabases/TreatmentServices/Pages/default.aspx)

**Canadian
Addictions
Organizations:**

[www.ccsa.ca/Eng/KnowledgeCentre/
OurDatabases/AddictionsOrganizations/
Pages/default.aspx](http://www.ccsa.ca/Eng/KnowledgeCentre/OurDatabases/AddictionsOrganizations/Pages/default.aspx)

**Directory of the National
Native Alcohol and Drug Abuse
Program (NNADAP):**

[www.hc-sc.gc.ca/fniah-spnia/substan/ads/
nnadap-pnlaada_dir-rep-eng.php](http://www.hc-sc.gc.ca/fniah-spnia/substan/ads/nnadap-pnlaada_dir-rep-eng.php)



Subject: Cree Mineral Exploration Board

The Cree Mineral Exploration Board was created as a result of the signed agreement (Paix de Braves) between the Cree Nation and the Quebec Government. A five year implementation agreement was signed for funding purposes between the Cree Regional Authority, Cree Mineral Exploration Board and the Quebec Government.

The main purposes of CMEB includes amongst others the following:

- 1) assist the Crees in accessing mineral exploration opportunities;
- 2) facilitate the development of mineral exploration activities ;
- 3) Facilitate and encourage the access by the Crees and Cree Enterprises to regular Quebec program funding and other encouragements for mineral exploration activities;
- 4) Act as an entry mechanism for offers of services by Crees and Cree Enterprise in the field of mineral exploration.

Furthermore and according to the Annual Program of Activities – CMEB (2003-2004), the board promotes, initiate and support training programs, and furnish assistance to job development, placement. The CMEB provides also geological and geosciences based expertise to the communities and the individual exploration. This includes guidance to the geosciences data and environmental impacts assessment.

If your are a Cree and are considering to submit a proposal to the CMEB please get in touch with the Chief Geologist Youcef Larbi in Wemindji at 819 978 0264 extension #327.



www.cmeb.org



GGM

GRANADA

GOLD MINE

*Drill rigs find significantly more gold - almost double the amount previously estimated by the Block Model
Granada now is one of the largest gold deposits along Quebec's Cadillac Trend*

Granada Gold Mine Inc. recently announced a major revision in the resource estimate for its Granada Gold project located near Rouyn-Noranda, Quebec. The estimates are in the two tables below and details are published in the Granada news release issued May 16, 2017.

The new estimate was the result of exploration drilling that took place in the fall of 2016 and in early 2017 and was a major change from the previous estimate, since it includes the first estimate of high-grade resources recently discovered in zones at depth in a northern portion of the property.

When the geologists included these latest drilling results, their Global Block Model for the property showed significant increases in tonnages, grade and the number of ounces of gold (Au) in the ground.

Granada May 2017 Mineral Resource Estimate			
<u>Category</u>	<u>Tonnage</u>	<u>Au g/t</u>	<u>Au oz.</u>
<u>Measured in-pit constrained</u>	17,068,500	1.14	625,000
<u>Indicated in-pit constrained</u>	4,507,000	1.26	182,700
<u>Total M&I</u>	21,575,500	1.16	807,700
<u>Inferred Underground</u>	10,386,500	4.56	1,523,800
Measured & Indicated open-pit constrained at 0.39 g/t Au cut-off (\$21.30 per <u>tonne</u>).			
Inferred underground north of open-pit at 1.5 g/t Au cut-off (\$81.99 per <u>tonne</u>).			
Resource estimate by <u>GoldMinds Geoservices Inc.</u>			
Mineral resources are not mineral reserves and do not have demonstrated economic viability.			

The accompanying table shows the Model's different classifications of resource in 2017 compared to the previous estimate published in 2012. Note that the increase was primarily in the estimate for the Block Model Inferred category, which showed a 233% increase – to 3,436,000 ounces (oz) of gold in 2017 from 1,033,000 oz of gold in 2012.

The estimates were supervised by Claude Duplessis, P. Eng., of Goldminds Geoservices Inc., a geological, environmental and mining consultant. He is an independent qualified person in accordance with National Instrument 43-101.

Next Steps for Granada

With this new perspective on the size of the Granada deposit, which now is one of the largest in the area, the company will be considering its next steps for advancing the development of the property.

The company has engaged an engineering firm to study options for the building of a new mill for the property. A Preliminary Economic Assessment in 2012 indicated the Granada mine, which operated for a few years in the 1930s before a fire destroyed the surface structures, had enough resources to produce 100,000 oz Au per year for 11 years. The new resource calculations will now have to be taken into account.

In addition, there are good reasons to continue exploration drilling at the Granada property. First, within the area previously drilled, there is a need for additional drill holes to provide more certainty about the location of the high-grade gold veins and to upgrade the estimate by shifting ounces from the Inferred category to the Measured and Indicated categories as drill holes are located closer together.

Second, only 20% of the mineralized strike length identified by geologists has been explored. The company has additional high-grade targets it would like to drill in areas that have still not had exploration drilling. If more gold is found outside the currently drilled area, it could lead to a further increase in the resources and value of the property.

Additional information is available at Granada's website at www.granadagoldmine.com.

Granada Global Classified Block Model						
Granada in situ Comparative, 2017 vs. 2012 (0.40 g/t cut-off)						
	2017			2012		
Category	Tonnage	Au g/t	Au oz.	Tonnage	Au g/t	Au oz.
Measured	22,585,000	1.09	791,500	28,735,000	1.02	946,000
Indicated	20,019,000	1.15	742,600	18,740,000	1.09	659,000
Total M+I	42,605,000	1.12	1,534,000	47,475,000	1.05	1,605,000
Inferred	81,691,000	1.31	3,436,400	29,975,000	1.07	1,033,000



Visible gold in recent rock samples at the Granada Mine



GIN-COR IS GOING NATIONWIDE & SEEKING EMPLOYEES FOR THEIR RAPIDLY EXPANDING BUSINESS

Gin-Cor has been renowned for decades for building some of the best built, best backed heavy duty and vocational trucks on the road.

The bulk of their work had been in Ontario and Quebec, but with several recent acquisitions, and an expanded dealership base, President and CEO Luc Stang says they are ready to take Gin-Cor's brand of "Precision Tough" coast-to-coast in a bigger way.

Gin-Cor's reputation means industry stakeholders know that they provide some of the best vocational trucks in Canada. The Mattawa-based Gin-Cor Industries has earned a reputation for product excellence in truck uplifting and the supply and installation of custom equipment for specialized vocational applications like dump trucks and snow plows, the big Class 7 & 8 four-axle vehicles.

In addition, Gin-Cor acquired operations that enabled them to bring years of experience to the table in handling the customs modifications and uplifting to the

Class 5 & 6, double-axle trucks. As well, their entry into the trailer market makes them a leading supplier of tag trailers and heavy haul float trailers with a product line that ranges from tag-along 2 axle trailers to 100 ton and 13 axle units. Gin-Cor manufactures trailers with a high level of pride in design, quality and workmanship.

Now Gin-Cor is expanding its horizons to bring their brand of Precision Tough across Canada. Just this month they made in-roads in the Atlantic provinces, with their first dealer of Gin-Cor Trailers. They also made a splash with a successful appearance at the Maritime Truck Show that took place in Moncton, New Brunswick.

Stang says it's been an incredible couple of years of growth but he and his team are ready for more. "Our rapid success, and expansion has lead to us having a total of 8 locations today, in Ontario, with some focusing on manufacturing, others on sales and service and some dealing with parts and sub-



Luc Stang

dealership. This is one of the reasons we have been privileged to be officially ranked as One of Canada's Fastest Growing Companies, by PROFIT 500, and that's something we could never have accomplished without the great team we currently have in place," he explains.

That is why the company is now seeking to add to its roster of companies looking to be part of the excitement and growth, as well as a need to grow their workforce by thirty to fifty percent. Those interested in doing should know the most important characteristic Stang seeks is a good fit for what his company is known for: being Precision Tough.

"We're using that on all of our marketing materials now, and we're looking to trademark it", he says. "We invested in an extensive audit of all our departments and dug deep to see what it is that defines us and what it is that makes us unique on the way we build vehicles and products that owners want to own, and drivers want to drive."

So just what is "Precision Tough"?

Going back to the company's early days, there was always a standard to uphold, in the "precise" way they delivered the best quality in the industry. Nothing is more important at



*Another
"Precision Tough"
vehicle from
Gin-Cor.*

Gin-Cor will soon be in the running for another PROFIT500 award. If they win in 2017, it will be their third year in a row being ranked as One of Canada's Fastest Growing Companies



Gin-Cor than the quality and craftsmanship of the work they do on the trucks and trailers they produce. You'll see the precision in every weld, or the way wires are carefully and precisely bundled and secured. No tangles of wire to struggle through here! But it's more than that; for example Gin-Cor invested in their own sandblasting area, to take every vehicle down to base metal and apply their own precisely computer-catalogued tones of paint, because they discovered that way the

paint will last much, much longer.

And the "tough" part of "Precision Tough"? It's the solidly built, dependable, strong nature of everything they do. These vehicles are tough, and the last longer and perform better because of it. And Gin-Cor's headquarters in Mattawa, Ontario (just outside of North Bay) is the perfect place for toughness! Rugged outdoors and terrain is transformed into some of the most brutal and frigid conditions in Canada when winter hits.

These vehicles can be tested in some of the toughest conditions, just by going out the shop doors.

And now, Gin-Cor is rapidly expanding and seeking employees who believe they too are "Precision Tough". The company is hoping to hear from you if that's the kind of workplace you'd enjoy.

"Skills are important, but equally important is attitude," explains Stang. "If you believe you're 'Precision Tough', we want to hear from you today," he adds. "We need everything from truck and trailer technicians, to office clerks and bookkeepers. We also need a 'Precision Tough' Engineering Technologist."

The job opportunities don't stop there. Gin-Cor's success means they also need to fill other positions including welders, painters, sand blast operators, and general labourers.

Companies or individuals willing to become part of Gin-Cor's growing family are invited to contact the company at: www.gincor.com.

Tel: 705-744-5543, or

Luc Stang at 705-471-1912



PRECISION TOUGH

GIN-COR PROUDLY SUPPORTS THE VOICES OF VISIONS BLUE RIBBON CAMPAIGN.



CRANE TRUCKS



SPECIALIZED HEAVY HAUL TRAILERS



SNOW PLOWS



DUMP BODIES



CUSTOM TRUCK BODIES



Ward Resmer - Sales
Brandon Resmer - Service
1-866-628-8292



www.gincor.com



www.jctrailers.ca



www.durabody.com

HAVE YOU REGISTERED YET?

NATIONAL GATHERING OF ELDERS



September 11-14 2017

**Edmonton Expo Centre
Edmonton, Alberta**

INDIGENOUS CULTURAL SHOWCASE ELDERS FORUM

Grand Entry
Holistic Wellness

Elders Talent Show
Artist Showcase

Entertainment
Golf Tournament

VENDORS & EXHIBITORS ELDERS SOCIAL DANCE

ELDERS FORUM TOPICS

Climate Change | Missing & Murdered Indigenous Women
Cultural Revitalization | Reconciliation



Toll Free
1-800-661-9804
16615 109 Ave NW
Edmonton, AB T5P 4K8

COMPLIMENTARY SHUTTLE SERVICE

PLEASE QUOTE
GROUP CODE
"NGA"



Toll Free
1-866-272-6750
16675 109 Ave NW
Edmonton, AB T5P 4K8

Contact Email: eventcoordinator@ngekanata.com

WWW.NGEKANATA.COM





Helping people prepare and deal with flooding

Springtime in Manitoba can bring with it many things, including flooding in communities throughout the province.

This year has already seen a significant amount of flooding in Manitoba and the Canadian Red Cross has been there to help families who have been affected. As part of an agreement with the federal government, the Red Cross Disaster Response Team has been supporting First Nations in Manitoba that have been impacted by flooding.

“Due to a heavy melt and high water levels on rivers and lakes, the Canadian Red Cross Disaster Response Team has helped families who have had their lives impacted by flooding in communities in different parts of Manitoba,” said Cailin Hodder, Senior Manager of Disaster Management for the Red Cross in Manitoba and Nunavut.

Due to the significant amount of snow that melted in the province, the Red Cross helped out a number of communities where homes have been impacted by overflowing rivers and overland flooding.

“Major flooding can have so many different impacts. For many people, their homes become completely inundated with water, especially in basements. For others,

flooding washes out roads, leaving them impassable and cutting off access to necessary services outside of the community,” said Hodder.

Within the First Nations communities impacted, the Red Cross has been supporting families who were evacuated from their homes, with lodging, food, support and other necessary personal items.

While the Red Cross team has been working to support families dealing with flooding, a large amount of work had already been done to prepare before the flooding even began.

“My team visited 26 First Nations in Manitoba that were most at risk for flooding in the weeks leading up to the melt,” Hodder said. “We helped them plan for potential flooding and, in some communities, looked at homes that were at the greatest risk for flooding.”

Within First Nation communities in Manitoba, their leadership determined what they needed most to prepare for flooding and the Red cross team further helped with that preparation.

Once the melt started, some communities did not have to evacuate but needed help to keep the floodwaters at bay.

“Our team worked with the First Nations to help them get access to sandbags and sandbagging equipment, so they could build dikes to protect homes at risk from flooding,” said Hodder.

While the Red Cross has an agreement to assist First Nations in Manitoba, the team also helps other communities and families in need.

“In April, there were more than a dozen rural municipalities and towns in Manitoba

that had declared a state of local emergency due to flooding,” said Hodder. “Our team worked alongside these communities to see how we could help them and their residents.”

The Red Cross provided clean-up kits, free-of-charge, to a number of rural communities so that families could start dealing with flooding in their basements. The clean-up kits include a broom, a mop, garbage bags, gloves, bleach and a pail.

“While it has been an issue this spring, flooding is something that can seriously impact families and communities any time of year,” Hodder said. “All it takes is a major rainfall event to trigger river flooding.”

The Red Cross has a number of tips for communities and families on how to deal with flooding.

For communities:

- Determine the risk of flooding based on provincial reports of potential flooding, history and proximity to rivers;
- Have the proper equipment such as inflatable dams to put around homes, as well as sandbagging equipment including sand, bags, and sandbagging machines or shovels;
- Make sure everyone in the community is informed of the potential risks for flooding and that residents at greatest risk are prepared;
- Determine if any key roads in the area are at risk.

For families:

- Understand the potential risk of flooding in your area. Listen to official reports and updates from your community;
- Every family should develop an emergency plan around what to do if they must suddenly



DISASTERS CAN HAPPEN ANY TIME,

often without warning. In Canada, many First Nation, Métis and Inuit communities are particularly vulnerable to natural disasters and some remote northern communities deal with forest fires and floods every year.

When community members are prepared, they are better able to cope with an emergency and they help to make their community more disaster-resilient. Follow the three simple steps below to ensure you and your family are prepared in the event of an emergency.

1 KNOW THE RISKS

Learn about the types of emergencies that could happen in the area where you live.

2 MAKE A PLAN

Prepare a plan so that in an emergency, you and your family will know what to do.

3 GET A KIT

Prepare a home emergency preparedness kit in the event an emergency situation confines you to your home for a period of time. Also, prepare a 'grab and go' bag for you and your family members that can be taken with you in the event you have to evacuate. These two kits will help ensure you and your family remain healthy and safe during an emergency.



**CANADIAN
RED CROSS**

Learn more at
redcross.ca/ready

evacuate their home due to an emergency such as flooding. Determine where everyone is going to go and what to do in case family members become separated;

- Learn if access to roadways in and out of the community are at risk of being compromised. Follow directions from local authorities if a road has been damaged by flooding;
- Every family should have an emergency kit ready in case there is a sudden evacuation. This kit should include basics such as water, batteries, a radio, non-perishable food, important documents and other personal items your families may need to be self-sufficient for up to 72 hours during an evacuation.
- When a flood warning is issued, check with local authorities for updates on what to do next.
- Help ensure vulnerable family members, neighbours and friends are safe.
- When it is time to clean-up a flooded home, take proper precautions such as wearing rubber boots and gloves due to potential contamination in flooded areas.



BGM
BARKERVILLEGOLD.COM



Osisko Mining - A Leading Canadian Gold Exploration and Development Company

Osisko Mining is an exploration and development company with a focus on precious metal resource properties in Canada. Osisko's vision of sustainability is to create value and opportunities for our shareholders, partners and community stakeholders. Our sustainability objectives are focused on four key components: Health & Safety, Society, Environment and Economy.

The Osisko group was responsible for the successful discovery, development, building and production at the Canadian Malartic deposit, Canada's largest producing gold mine. Osisko Mining is the recreation of the original company with many of the original participants, including the original founders of Osisko and the addition of the Virginia Mines team who were responsible for the discovery of the Éléonore project and more

goal of this new combined team is nothing less than to create a new sustainable Canadian Mining House, with the Windfall Lake gold deposit as its cornerstone asset and its growth focused on developing new mines in the Urban Barry and Quévillon areas.

Osisko's projects include major properties in Québec and Ontario. The company holds a 100% interest in the high-grade Windfall Lake gold deposit, a 100% undivided interest in a large area of claims in the Urban Barry and Quévillon areas (over 3,300 square kilometres), a 100% interest in the Marban project, and properties in the Larder Lake Mining Division in northeast Ontario. Osisko also holds interests and options in a number of additional properties in northern Ontario.

commenced in October 2015 and continued throughout 2016 and 2017. The results to date have been very encouraging, providing verification and good correlation with historic drilling performed by previous operators on the property. The deposit remains open at depth below the Red Dog intrusion, and is open at both the eastern and western extents. Three new zones of gold mineralization have been discovered to date, including Lynx, Fox and Black Dog. Osisko has a large 400,000 metre drill program underway with 25 drill rigs, and is expecting to add more metres and drills as the project progresses.

Osisko shares information about the Windfall Lake Project with the Aboriginal communities of Waswanipi, Lac Simon and Obedjiwan. Some of the ways information is shared with communities are through regular notification of activities, meetings and presentations.

Osisko has met with tallymen and community knowledge experts to learn about land use and traditional knowledge relating to the Windfall Lake Project. The land use meetings provided an important forum for documenting knowledge, concerns and expectations early on in project development. These meetings were also an opportunity to explain the nature of the work we have planned and to listen to the concerns of local community members.

A detailed environmental assessment is underway at Windfall Lake, which will be used as a planning tool to determine the project's possible effects on the natural environment, and to identify and implement solutions to mitigate potential issues.



than 20 years expertise on the unexplored territories of Northern Québec. Osisko's and Virginia's exploration teams are recognized as some of the best explorers in Canada. The

Windfall Lake Project

In 2015, Osisko acquired the Windfall Lake Project. Osisko's drill program



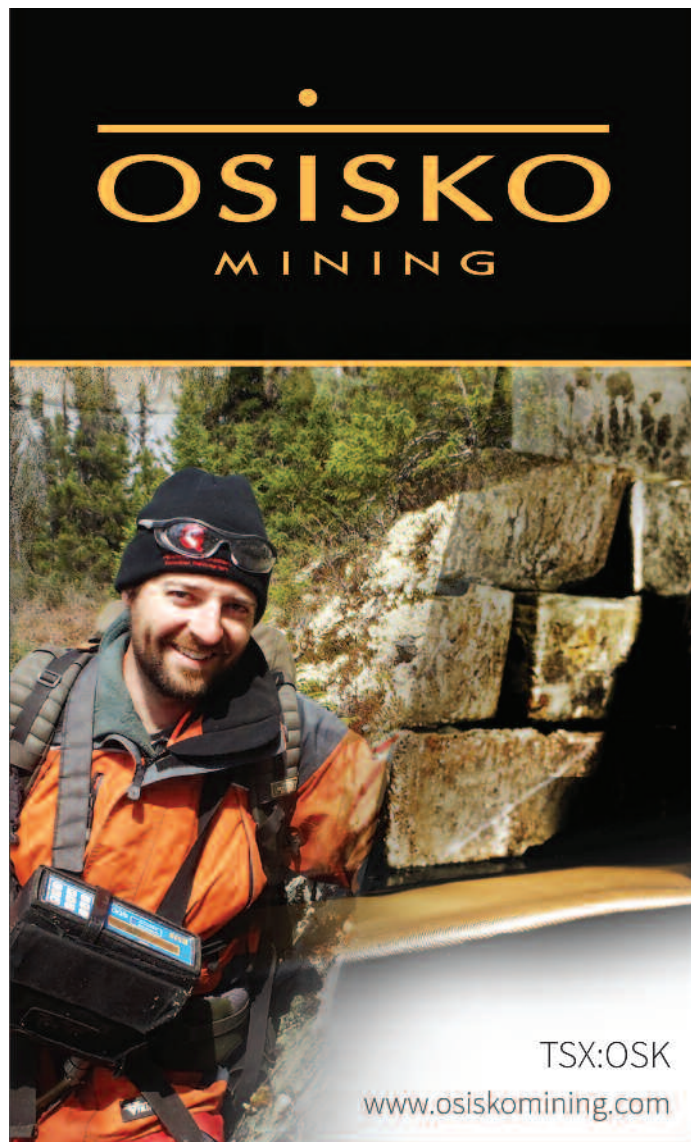
The first step in an environmental assessment study is to gather baseline information about the natural environment where the project is planned. Baseline environmental field studies undertaken in 2016 at Windfall Lake include studies of the birds and ducks, nesting areas, water levels, water quality, small mammals, fish and fish habitat, vegetation and wetland, traditional land use. Osisko has worked with local scientists and Aboriginal people to study the water and sediment quality, water levels and water flow in Windfall Lake, the surrounding waterways and unnamed lakes. Fish studies took place in August 2016 at three lakes and four streams in the Windfall Lake project area. Plant and animal studies focused on birds and bats, as well as a vegetation sampling program in the summer of 2016. The vegetation study helped us create a map showing different types of forest and wetlands in the area and identifying the important areas that provide potential moose habitat. Osisko also worked with local trappers (tallymen) to study small mammals in the area. Osisko plans to continue our existing environmental field programs in 2017, and will begin new baseline studies including a 6 month air quality monitoring program,

sampling and analysis of local geochemistry and studies of the regional groundwater movement and quality.

In May and June 2017, Osisko filed a Preliminary Project Information report with the Québec government (Ministère du Développement durable, de l'Environnement et de la Lutte contre les changements climatiques) and a Project Description report with the federal government (Canadian Environmental Assessment Agency). The report envisions the design of a 1,900-tonne per day underground mine. The environmental assessment process will evaluate two alternative locations for a processing plant – one at the Windfall site and another near Lebel-sur-Quevillon.

Osisko is committed to providing stable employment and opportunities for growth to local First Nations members when one of our projects is moving forward within their area. For example, at the Windfall Lake Project, Waswanipi First Nation members are a key component of our workforce, filling the following positions: environmental assistant, general labourer, core cutter, housekeeper, administrative assistant and H&S prevention officer.

155 University Avenue 1440
Toronto, Ontario M5H 3B7
T (416) 848 9504
F (416) 363 9813
E info@osiskomining.com



TSX:OSK

www.osiskomining.com

**A NEW
ERA**

GGM

GRANADA

GOLD MINE



- ✓ *Focused on maximizing shareholder value*
- ✓ *Resource Update in 2017 showed Granada is one of the largest gold deposits on the Cadillac Trend*
- ✓ *Granada Project will deliver long-term economic and social benefits to all stakeholders*

TSX-V: GGM

GranadaGoldMine.com

Your. Life. Counts. – what we do *is in our name.*



Your Life Counts

A suicidal individual faces a situation no less potentially fatal than anything else that can kill him/ her. It's a life threatening scenario and should always be taken seriously. In Canada we lose around 4,000 Canadians each year to suicide. To give this some perspective, imagine 8 jumbo jets crashing each year with no survivors. What a hoohah there would be if that ever happened. It is shocking to note that the incidence of suicide among our First Nation communities continues at least 6 times the national average, and this statistic can rise even higher when considered in a local context within some of the most fragile and remote communities. And for every suicide death, across the population, 20 individuals attempt suicide and survive. That's 80,000 people a year who attempt and survive.

The statistics are shocking enough. But remember, each one is a human being. Someone's mom, dad, brother, sister/other family member. A loved one, to someone. And it could be someone you know. That's 4,000 individuals lost over the span of a year from sea to sea to sea. Each and every year. Somehow, that appalling number has less effect and less impact. It's easier not to talk and to sweep it under the carpet, time and again. Have you ever wondered, why? And it is all the more tragic as suicide is probably the most preventable of all causes of death.

We lose a lot of Canadians. It's a massive loss to society in all kinds of ways. Across the country, it's a lot of families who are hurting. Deeply. And our hearts go out to each and

every one. Recognizing the signs in the life of someone who is wrestling with suicide is not easy. Some people give clues by their behavior and demeanor and others show little to no signs at all. So, what can you do? Get informed. Learn more about this silent epidemic of our age. Attend a SafeTALK seminar or dig deeper for training. Don't sweep it under the carpet. There are some useful resource links at the end of this article.

Life has a way of getting our attention. 2016 was one such year for me. Anyone who has not felt depressed, defeated, disappointed, disenchanted and much more at one point or another in their life is either lying or is not human. We all struggle from time to time but what ought to keep us going is hope itself. Hope is always there. Hope

never leaves us. So, even in the toughest times, we should never let go of hope.

"Courage is not having the strength to go on, it is going on when you don't have the strength..." – Theodore Roosevelt, 26th President of the USA.

I, together with the YLC team, daily have the honour and privilege of coming alongside people in their journeys through life. The trauma that we as humans can experience can be utterly profound. Indeed, words fail me when I think of some of the people and situations I have encountered over many years, and the precious opportunities that YLC has to help steady the lives of individuals in their most vulnerable moments.

YLC helps to steady individuals and families online and offline and reconnect them with their reasons to live. Daily. Year in, year out. It's a sobering thought to consider that a survivor of suicide loss is at a 7 fold increased risk for suicide. Working with survivors of suicide loss is in many ways suicide prevention too.

Saving someone's life from suicide is something any of us can do in our day to day lives. Suicide prevention and intervention is not so specialized that only the qualified few can do it. Saving a life is a precious responsibility that we all have. Each of us can steady someone via a simple act of kindness, a thoughtful word, a listening ear and taking time, among other things. When more specialized help is needed, you can help connect the individual with an agency such as



Rory Butler

Your Life Counts or alert the emergency services.

The right mix of help and support for people who are so vulnerable - the least of these economically and socially – helps to reconnect them with their reasons to live. YLC is a safe place that they can come to where they can receive help and support unconditionally.

To put things into some context, YLC has been developing without the needed research and development funding from its Ontario, Canada base. In 2014, the World Health Organization called for Suicide Prevention to be a Global Imperative in a document of that title. YLC was a major catalyst for change in assisting Kitchener Conestoga MP Harold Albrecht, to establish Federal Bill c300 [An Act Respecting The Establishment Of A Framework For A National Suicide Prevention Strategy In Canada] into Canadian Law. The Bill was enacted in November 2012. With change of Government and political priorities, we have seen little progress in real terms. YLC received the President's National Award from the Canadian Association for Suicide Prevention in recognition of our catalytic work, but we received no financial assistance from the Government.

I mention this because YLC is not alone in being utterly squeezed financially. Our work is an 'orphan issue' – so often ignored and swept under the carpet until it is too late. There are other organizations spread out in North America and around the world who have a similar story to tell. In today's world,

people need to know that suicide is never the answer. All that happens is the seemingly endless, unbearable pain does not end with suicide. It transfers to their loved ones around them who then have to find ways of coping and making it through those feelings. And some won't make it. Survivors of suicide loss are at a 7 fold increased risk for suicide. This is why we must break the cycle of despair and reconnect people with their reasons to live.

There is no pill that I know of that will mend a broken heart, a broken dream, a broken spirit. Psychotropic prescription medications (anti-depressants, etc) are important and helpful for some...but not all. The side effects of many of these meds include mood swings, compulsion to self harm, depression and suicidal ideation. It takes just one reason to keep someone alive in their darkest moments. Reconnecting individuals with their reason(s) to live is the key to restoring strength for today and bright hope for tomorrow. We have much work to do. But we can't continue our work without responsible funding. We need to expand our core team and be equipped with the cutting edge technology tools and other supports to meet the desperate needs of the many people who look to us for advice and support.

Further context. Paradoxically, YLC has helped some Syrian refugees in Canada who have found integration into the Canadian culture difficult amidst trauma that they have sustained in their home land. The cost of bringing 25,000 refugees from Syria to

Canada is estimated at \$1 billion.

Forbes Magazine reports that Pharmaceutical companies spend around \$5 billion creating a new drug, and getting just one drug to market can cost \$350 million before the medicine is available for sale.

Supercars have sold at auction for nearly \$40 million US. That's just one car.

A Picasso oil painting sold for \$106 million US. That's just one painting.

TV game shows have made it possible for an individual to win upwards of \$1million in one show. Lottery winners have won hundreds of millions of dollars in just one win.

How can we put a value on just one life? Just ask anyone who has ever lost a loved one to suicide.

Soon, you'll be hearing a lot more about our crucial new global initiative 'Share Reasons2Live'. It's a big vision that is all about amplifying our mission, steadying many more lives, and echoing the call of the World Health Organization to make suicide prevention an imperative and to change the landscape in the way suicide is understood. You'll see our focus is on life, not suicide. Because suicide is never the answer.

Rory Butler is Founder & CEO of www.yourlifecounts.org and can be reached at rbutler@yourlifecounts.org

For more information on training events
www.livingworks.net
www.suicideprevention.ca



EQUIPMENT, PARTS & SERVICE
Construction + Forestry + Mining







1 866-458-0101 • smsequip.com

ENFORCER
GOLD CORP

TSX.V: VEIN | FSE: N071

Drill rigs
soon turning at the
underexplored
Montalembert
gold project,
Abitibi Greenstone Belt.

647.496.7984
enforcergold.com





Canada 150 and where are the children?

***Dr. Cynthia Wesley-Esquimaux,
Chair on Truth and Reconciliation,
Lakehead University***

We have come a long way in this country now called Canada, and this year Canadians are celebrating 150 years of Confederation, of getting together, of being one with each other, of expressing unity...except, it hasn't really been quite like that in all corners has it? After more than 5 centuries of contact, Indigenous peoples are unquestionably doing better, we are better educated, better housed, have better health, and better access to services – well, depending on where we live. Our families have increasingly moved into urban centres so our children will have access to those things so many other children take for granted. Except, once again, there have been no guarantees of “better” anything appearing, expectations of better life experiences are not always found in urban centres. We have northern communities with wonderful people, vibrant cultures, Indigenous languages, and continuing needs that have not been met by the Canadian state. There will be no Canada 150 celebration in a community that is still fighting for a school, proper housing, medical care, and food security.

Our children, our hope, our future, our struggle. We love you, we want the best for you, and yet far too many of you are left behind, dropping out of school, fighting addictions, unemployed, knowing something is not right, is messed-up, and is way too hard to navigate.

Dedicated warriors are going to battle for you; people like Cindy Blackstock, Mary Teegee, Mary Eberts, Carolyn Bennett, me, and many good men and women from coast to coast to coast, but we also know the war is sometimes happening a lot closer to home. Home, where addictions can take root, where

food security is an ongoing issue, where the housing is inadequate, where hurts are hidden behind closed doors and where hurt people hurt people even when they try hard not to. We know the internet sweeps wide, and pulls hard on hope, lashes out relentlessly, and makes the unreal seem real enough to believe. Don't just believe it, ask someone you trust to help you make those decisions.

Institutions like Child Welfare were created to help, and sometimes it still does, but far more often it is hurting you, our children. Reform is on the horizon, but nothing happens as quickly as I and others would like it to, and our impatience is wild, raging, and demanding. We are fighting as hard as we can, and it has taken years of constant hammering at the door. We want a yes for you, change for you, a life for you full of love, laughter, safety and learning. We are working to keep you in your own homes, with parents who will get any help they need or want, so we can restore health to our nations, through healing, and extended preventative care for the entire community.

I believe your lives are important, we all do, and your power is significant, ancient, learn to use it and fight for your lives and for those of your parents who have been hurt by change they could not stop. We have so much to offer as a people, cultural knowledge, a closeness to the land, a different kind of knowing that is ancient and enduring. It is yours, and mine to hold.

Do not cover up your fear with substances, if you must hide from yourself while you seek your own strength, hide in books, in music, in stories, and in each other's inner beauty. Listen to one another and encourage the

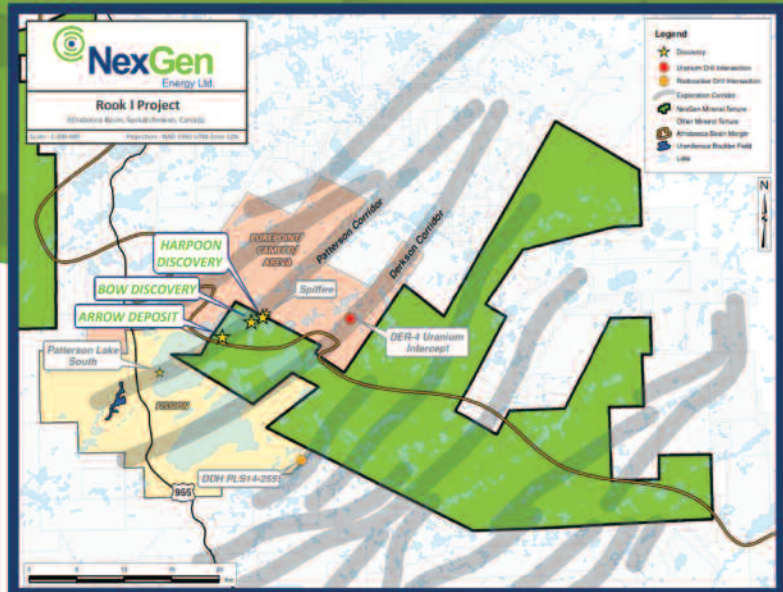
growth of your inner power. Taking your own lives before you have lived, drowning your pain, pain which has something profound to teach you, pain your own ancestors overcame, is wrong. Your life is essential to the continuity of humanity. Yes, you count, you matter, you have something unique and specific to offer everyone. I want to thank you for that, for being the you that inspires me to get up every morning and work hard to ensure your family, your community and your nation and mine continue. I found my way from a broken home to a better education, to healthy children and strong marriage and I know you can do it too, and I am here to help in any way possible, you just have to ask.

Canada is celebrating 150 years of confederation. We are celebrating as much as 15 thousand years on the territories where we live today. Maybe thousands more, because our elders tell us we were created where we are, we didn't come here to this place now called Canada from anywhere else. The Creator lovingly and deliberately placed us right here and our responsibility is to ensure this place remains as beautiful and bountiful as possible with us upon it, protecting, learning, teaching, and continuing.

I hope you will take this to heart and make an effort to complete your studies, to understand we all have a story for good or bad, that things can improve, you will find happiness, and yes, you'll suffer again too, but you will live, and your life will touch others. Your gifts are hidden within you, the Creator made sure we all come prepared to be of service, look within and help lift our nations to their former strengths. Miigwetch, Cynthia...

Arrow

Canada's Largest Uranium Exploration/ Development Project



nexgenenergy.ca

NYSE/TSX:
NXE



C E M I
Centre for Excellence
in Mining Innovation

All-season Transportation in the Far North

Many Far North communities agree that a sustainable, affordable and controlled all-season transport system is the best option for remote community access. The Centre for Excellence in Mining Innovation (CEMI) has been developing a project plan for a transportation system that promises to accelerate all-season access for large equipment to remote mining camps and this technology could also be useful for connecting remote seasonal access communities.

For remote fly-in communities, only ice roads allow larger quantities of supplies to be delivered for a few weeks, and the rest of the time many communities are isolated, even from each other. Climate change is reducing the duration of ice roads and the delivery of diesel squeezes out everything else. Everybody knows this has to change but there are no easy answers.

Building all-season roads sounds obvious – creating the capability to deliver much needed infrastructure like water purification plants, sewage treatment systems, new homes, schools and medical centres, as well as less expensive consumables. But community elders and leaders also recognize the negative side; with an all-season road, it would be very difficult to prevent all the negative factors from arriving and impacting relatively vulnerable populations. The problem is that a road is a black and white solution – you are either connected to the road or you are not, there is nothing in between.

At CEMI, we think the technology we have identified is potentially a balanced solution, one that is capable of bringing the positive things communities need while managing the

negative, and one that gives local communities control over how and when they are connected. A grey solution, if you like, rather than black or white. The technology is called a hover-barge, a much larger and slower version of a hovercraft, but still capable of travelling every month of the year. But before we describe this in detail, we'd like to explain what CEMI is and how we identified the hover-barge as the potential solution for the Far North.

CEMI (the Centre for Excellence in Mining Innovation) was created to improve the social and economic performance of mining in Canada – to improve the safety and productivity of mining operations as well as their environmental impact. Most of the time this means working on technologies that will make underground hardrock mines across the country more cost-effective – reducing the cost and increasing the speed of production. We also work on developing the techniques that will reduce environmental impact of mine tailings management facilities (TMFs) – increasing our ability to monitor the system, implementing more reliable and lower-cost deposition techniques and reducing the risk of system failures. Mining is the number one employer of Canadian Indigenous people and generates a significant number of high paying jobs, and taxes. CEMI's objective is to maintain the global competitiveness of Canadian mines and develop technologies and techniques we can export to other mining jurisdictions around the world.

All mines have a finite life (mine-life), which means that they eventually run out of ore and close. This means we have to find and develop new mines in new locations –

and most of them will be in the Far North. But mines cannot operate without year-round transportation and easy access to low-cost electricity – just like remote communities – so there is a complete overlap between the needs of remote communities and the needs of new mining operations. Most modern remote mining camps resemble a small community.

The problem is that conventional solutions such as roads and hydro lines are hugely expensive and take decades to implement. Only mines with very high-value products such as diamonds and gold can afford to pay for these – for base-metal mines this is virtually impossible. So, in exactly the same way as CEMI deals with other challenges in the mining process, we went looking for a low-cost, rapid-deployment solution that could accelerate the development of these mines and that also has low environmental impact. What we found was the hover-barge. By adding certain innovative technologies, we think this is one of the solutions needed to build mines in remote locations, and by achieving this we can also accelerate the social and economic development of nearby communities.

Hover-barge Technology.

A hover-barge is a large flat platform that floats on a cushion of air created by large, on-board turbines and contained by a tough Kevlar skirt under the steel body. A hovercraft is a fast and maneuverable marine vehicle used by the military and emergency services to travel over water, beaches and wet-lands – but they cannot carry large loads. Hover-barges float on a cushion of air in exactly the same way but are large and slow



New: Slow, large-tonnage, freight delivery



Existing: Fast, manoeuvrable, low-capacity

and would lumber over lakes or muskeg or frozen tundra as they deliver heavy, large-scale cargoes. Until now, they have been pulled by winching systems or tractors but we believe the future lies with adding self-propulsion, - just like their cousins - the hovercraft. CEMI's demonstration project plans to convert hover-barges from a marine transport system to a hybrid marine and land-based transportation system - a land ferry. A fleet of hover-barges would quickly be able to deliver materials every week, or several times a week, all across the Far North to communities and mine-sites.

The first hover-barge can be built and demonstrated within two years and can be operating after three years. A fleet of hover-barges could operate along existing ice-road routes, connecting communities in the way they have always been connected. Hover-barges are modular - they are made up of flat metal segments that can be bolted together and made into units with different sizes and shapes. We think the two best sizes are one capable of delivering 200 tonnes of material to larger communities and the other for delivering up to 100 tonnes to smaller communities. Compared to a gravel road that will cost over \$500M and take almost ten years to complete, this is fast and cheap and allows essential infrastructure to start flowing into communities and remote mine sites much sooner.

The ice-road routes would have to be groomed slightly - in some places existing routes may be too narrow or too steep - and they will have to be modified to make the

route passable by the different-sized units. Hoverbarges are slow - 30km/hour - and have to re-fuel every 150km. Many of the routes in Northern Ontario are about 300km and this can best be supplied by two units working together. From an all-season supply depot, one fully-loaded hover-barge travels to the half-way meeting point where it meets the empty vehicle travelling back and the crews change over to the other barge. This makes it is possible to deliver 200 tonnes or 100 tonnes over this distance every 24 hours - twelve months a year.

The vehicles are classified as heavy equipment with diesel or LNG engines and they have to be operated and maintained by college-level trades such as millwrights, heavy equipment mechanics, diesel engine mechanics and riggers. At present, hoverbarges are regulated as marine transport with these regulations determining the credentials necessary to manage them. All of this creates employment for people in local communities that are supplied by the hoverbarges, along with the people and new businesses which would contribute to the distribution network.

Closure

There is still a lot of work for us to do to bring the hover-barge technology to market. CEMI sees the initial land ferry system being funded through a private and public consortium based funding model. It is much faster and cheaper than any all-season road and it can be used to connect many remote communities to any existing all-season road

system, not just those close to a mining operation.

Two hundred years ago the fur trade was as a globally important industry that contributed to the economic foundation of remote Far North communities; today the fur trade is no longer capable of supporting growing populations. Mining is a globally important industry and today it is the best chance of establishing a strong economic foundation for many Far North communities. This does not necessarily mean working in a mine; mines need many more people to transport and deliver equipment and supplies than to operate the mine. Neither does it mean environmental damage; new mines are very careful managers of their waste systems and in sensitive ecologies of the Far North, they will have to be even more vigilant.

The social and economic viability of any community anywhere in Canada depends on two factors; the economic activity in that community that creates the jobs that enable local people to buy the things they need, and the capacity to deliver the goods and services to the community that people want to buy. CEMI believes that using hover-barges to support mining projects has the potential to make both these things happen in the remote Far North, and could accelerate the delivery of social and economic benefits to remote communities and allow them to control the rate at which positive change happens.

For more information please contact Shannon Katary, VP Marketing, skatary@cemi.ca.

Tarku Resources, and why a social acceptability oriented company within the Eeyou Istchee James Bay communities of Québec could be the next successful exploration company

Following the recent acquisition of Eureka Exploration in June 2017, Tarku Resources is now a well-positioned exploration company focused on discovery for gold, PGE and base metals in the mineral-rich Eeyou Istchee James Bay territories of Québec. Dynamic and using modern exploration techniques, Tarku differentiates itself by conducting exploration in areas with strong geologic potential but also within areas with high levels of social acceptability to reduce investment risk for its shareholders and increasing wealth-sharing with host communities.

We are exploring places with reasonable prospects for developing a mine. A good exploration project relies on understanding the concerns and respect of values of all the stakeholders. Exploration projects can have significant impacts on the lives and surroundings of everyone involved, including suppliers and the local communities, not just the proponent. Tarku's vision is that exploration projects that are well received by and integrated into local communities should bring potentially long-lasting development for these same communities. Therefore, it is important that an exploration project, that we want to see becoming a mine, be at the right distance from nearby communities, not too near, not too far. This is what we call the Local Mine Concept.

Our unconventional perspective on exploration allows us to generate projects using exploration models recognized by the industry, but different than those generally applied over the years by other companies in targeted region. Well located, and along all season roads, our 100% owned, 35,679 ha of claims distributed over 7 projects in Québec offer great potential for new discoveries.

Upper Eastmain River greenstone belt district project

The Chateau Fort project is located in an active sector along the all season road 167 to the Stornoway Renard mine. The claims are adjacent and along strike with 2 southeast gold trends including the past producing Eastmain Mine that extracted 118,356 tm. at 10.6 g/t of gold between 1994 and 1995 (Ressources MSV, 1997). Recent prospecting work and geophysical survey as well as historical work outline several Au-Ag-Cu-Zn-As targets that will be follow-up during 2017. The project covering 12,721 ha of mining claims had only been tested by 6 drill holes over the years.

Matagami district projects

Eureka (now Tarku) used a different geological model than the typically applied VMS-type model used by the other companies over the years to identify base metals in the Matagami district.

Following this approach a significant 11,770 ha of mining claims which targets gold mineralization along regional fault zones east of Matagami was map designated. These 3 projects (which 2 of them are adjacent) have favourable context for gold as well as other base metals mineralizations.

The Apollo project straddle the regional Rivière Waswanipi ductile shear zone that affects alkaline lavas, polygenic conglomerates (Timiskaming-type) and porphyritic intrusions anomalous in gold (hundreds of ppb). This geological context shows potential for a well-known mineralization model that paves the way to recent mines in the Abitibi: the "Orogenic Gold associated with Alkaline Rocks and Porphyritic Intrusions" type. Tarku believe that this shear zone located on the northern edge of the Abitibi contact is similar to the Detour Lake Mine geological context.

The Admiral projects include two regional shear zones and shows potential for



mesothermal orogenic gold as highlighted by the Lac Olga Ouest showing located immediately east of the claims (5.9 g/t Au in quartz-carbonate-pyrite vein).

The Atlas project contains aluminous-type alteration and volcanic sequence with facies and geochemical affinity similar to the Bousquet Formation of the southern Abitibi (host of the LaRonde mine, also producing Cu-Zn-Ag). This distinctive geological environment highlights the potential for gold-bearing Volcanogenic Massive Sulphides mineralization (Au-Ag-Cu-Zn VMS).

In 2017, Tarku plans to explore these projects and will follow up of significant historical gold grains found in till back in the late 80s. Historical till sample data include samples with up to 19 gold grains and gold value of up to 4.94 g/t in heavy mineral concentrate. The source of this gold has still to be found!

Chibougamau district projects

In the northern part of the Chibougamau district, the same innovative approach of using different geological model than the typical "Chibougamau Cu-Au mineralization type", allows Eureka (now Tarku) to take a wide land position of 3,754 ha for orogenic gold potential along a regional fault. Even if there was no known gold showing back at the moment of staking in early 2016, the exploration model has been demonstrated to be right with the discovery on the Richardson project of a mineralized felsic volcanoclastic rock that contains 1.7 g/t Au in summer 2016.

Tarku now holds, with its adjacent Bullion project, 16 km along this new gold-bearing trend related to the regional Barlow fault. This faulted contact on the northern edge of the most northerly sedimentary basin of the Abitibi is interpreted by Tarku to be similar to the

Detour Lake Mine geological context. The plans for 2017 are to follow up this gold-bearing trend as well as a ground follow-up on other untested geophysical anomalies (VTEM).

The Tarku team

The team is also part of why Tarku Resources is well positioned in the exploration sector: Sylvain Laberge, the CEO has over 17 years of junior mining experience as corporate communications. The new President, Julien Davy has a MBA and a master degree in geology and

cumulates 19 years of technical and managerial experiences from junior and major exploration companies in Canada and internationally. In 2015, Julien co-founded Eureka Exploration with its long-time friend Benoit Lafrance who is the new exploration manager of Tarku Resources. Benoit graduate with a Ph.D. in Mineral Resources and has 20 years of experience in research, exploration innovations and project generation for many commodities. Benoit is the person behind Eureka's project acquisition and the fit with Tarku Resources

exploration interests was perfect. The management team also includes Jeff Sheppard as CFO, which brings several years of financial experience from different public mining companies.

With its well-positioned projects, its experienced team and its long term vision to have a participative approach with local communities to create joint decision-makers, Tarku believes it will differentiate itself from other exploration company for a successful future of projects in the Eeyou Istchee James Bay communities of Québec.

Advancing sustainable mineral exploration

TSX.V: TKU

Saskatoon - Montréal - Chicoutimi

www.tarkuresources.com

info@tarkuresources.com



TARKU
RESOURCES



*Toute une journée de plaisir
et de découvertes!*

*Come see the animals up-close and
enjoy a full day of discoveries!*

NOUVEAUTÉS Takins • Tapir • 4 lionceaux blancs • Phacochères • Lynx •
Reptilium • Nouveau secteur récréatif GRATUIT

NEW Takin • Tapir • 4 white lion cubs • Warthogs • Lynx • Reptilium • Free Play Area: An amazing maze and inflatable games.

**PARC
SAFARI**

HEMMINGFORD • MONTRÉAL

30 minutes de Montréal / 30 minutes from Montreal

(450) 247-2727 • parcsafari.com

ÉPARGNEZ / SAVE

\$250*

DU 24 JUIN AU
4 SEPTEMBRE 2017
FROM JUNE 24TH
TO SEPTEMBER 4TH

*Un rabais de 2,50 \$ par personne à
bord du même véhicule. Ne peut
être combiné à aucune autre offre,
promotion, rabais ou forfait.

One coupon per vehicle offering a
discount of \$ 2.50 per person, in the
same vehicle. Can not be combined
with any other offer, promotion,
discounts or packages.



C1596141



Building for the Future Alongside the Cree Community

Nemaska Lithium prides itself in building a project that unites all stakeholders behind a common goal for future generations. Deeply rooted in the Cree community of the Eeyou Istchee James Bay region, where the Whabouchi mine site is located, Nemaska Lithium has had the privilege to count on local stakeholders as close partners in the development of its project.

Nemaska Lithium's mission is to create a project that respects and honours the heritage it is built on. As early as 2009, year of its inception, Nemaska Lithium sought to partner with the Cree community, whose investment arm, the Economic Development Corporation, immediately became a shareholder of the Company. Nemaska Lithium was to be a project for the people, by the people.

NEMASKA LITHIUM WAS TO BE A PROJECT FOR THE PEOPLE, BY THE PEOPLE.

A Promise to the Cree Community

The foundation of our collaboration with the Cree community lies in the Chinuchi Agreement. Signed in 2014, that impact and benefit agreement aims to guide the working relationship between Nemaska Lithium and the Cree parties, namely the Grand Council of the Crees (Eeyou Istchee), the Cree Nation Government and the Cree Nation of

Nemaska, throughout all phases of the project. The Company also hired its own Community Liaison Agent, Mr. Wayne Rabbitskin, whose mandate is to be create an open and ever present channel of communication between the community and Nemaska Lithium for all dimensions of the project.

"THERE IS NO DOUBT THAT NEMASKA LITHIUM IS DETERMINED TO WALK HAND IN HAND WITH THE CREE COMMUNITY IN THE RAMPING UP OF THE WHABOUCHI MINE." - WAYNE RABBITSKIN, COMMUNITY LIAISON AGENT FOR NEMASKA LITHIUM

Developing Talent from Within

With youth representing almost half the population of the Cree community of Nemaska, there is an incredible opportunity to leverage their energy, talent, and ambitions to take an active role in the ramping up of Nemaska Lithium. As part of its profound desire to involve the community from inception all the way throughout the lifetime of the mine site, the four parties of the Chinuchi negotiations agreed to put training and job accessibility at the centre of the development of the project.

In order to do so and to nurture the close-knit, family-oriented culture of the

Crees, it was clear that training programs needed to be offered in the community of Nemaska. Local partners were approached to support and realize this mission: the Cree School Board, the Cree Human Resources Development as well as the Cree Nation of Nemaska. All were convinced that part of the success of the project would lie in a special program of qualifying training to be offered directly in village of Nemaska, teaching the fundamentals for jobs at the mine site in various areas of expertise.

Aiming for Excellence

True to its values of commitment³ (a combination of pleasure, passion and partnership), pushing the boundaries, accountability and cleverness, Nemaska Lithium developed a training program that resembles its core but also sparks excellence in the new recruits. Candidates will be taught the essentials of the technical aspects of their work in the field, but most importantly, they will be inspired to enact the know-how and soft skills required to evolve as a team towards achieving a common goal.

Once successfully trained, the new employees will be integrated into the participative management model implemented at both of the Company's



Whabouchi Lithium Mine to Power the Future

Nemaska Lithium
(TSX-V: NMX)
Tel.: 418 704-6038
Fax: 418 614-0627
Toll-free: 1 877 704-6038
info@nemaskalithium.com



working sites. Functioning without supervision, teams need to make decisions as a group to achieve the Company's business plan, one day at a time, making them take full ownership of their contribution to the project.

"PARTICIPATIVE MANAGEMENT IS THE FOUNDATION OF OUR CURRENT AND FUTURE SUCCESS." - CHANTAL FRANCOEUR, VICE PRESIDENT, HUMAN RESOURCES AND ORGANIZATIONAL DEVELOPMENT FOR NEMASKA LITHIUM

Paired with experienced professionals who were introduced to the Cree culture though dedicated training, the new recruits from the training sessions will then learn to become managers themselves, ensuring the continuity of the community's involvement throughout the lifetime of the project.

Enthusiast about the future

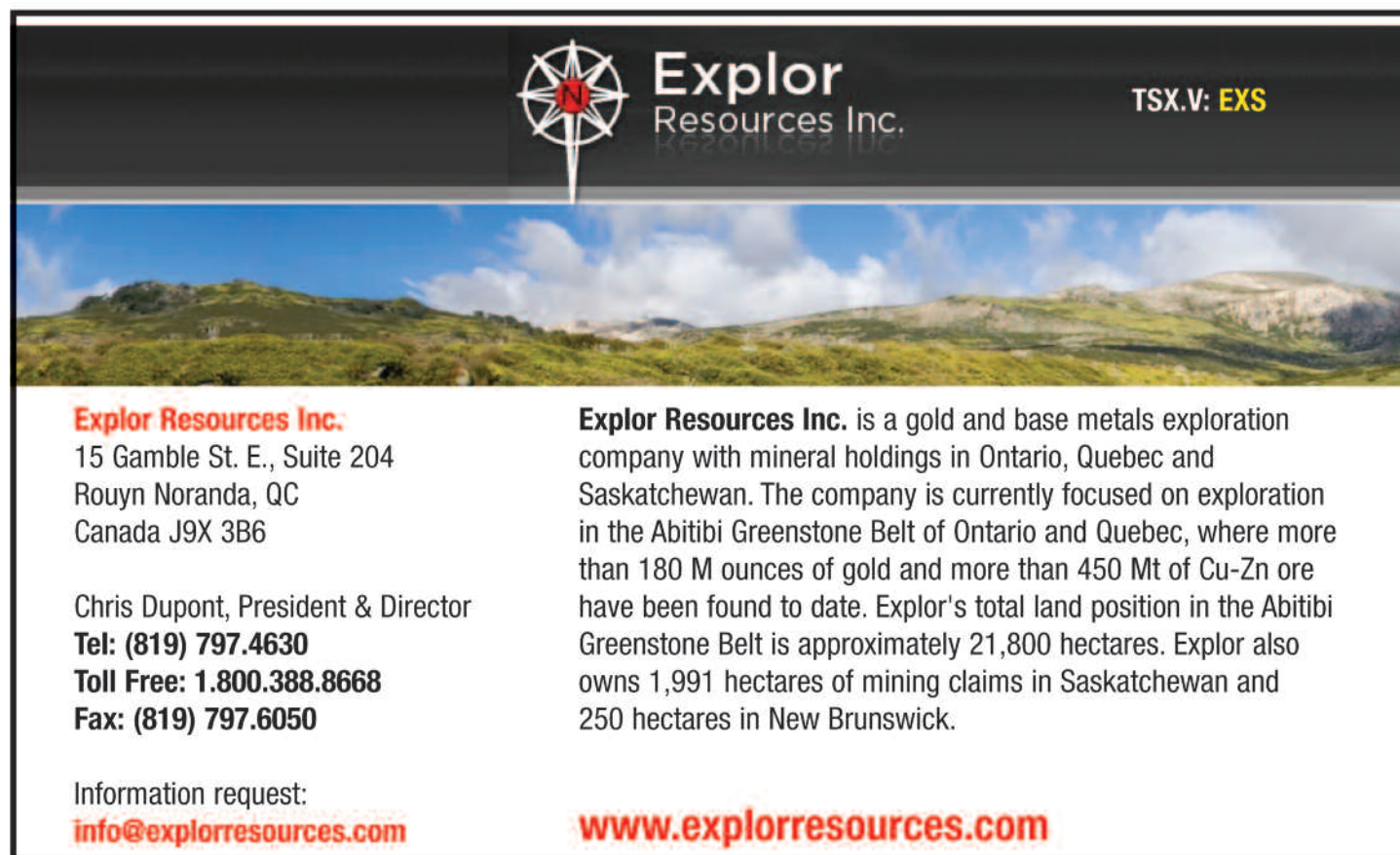
Once fully operational, the Whabouchi mine will employ over 130 people, the majority of which Nemaska Lithium hopes

will be recruited from the local training programs and the already qualified Cree workforce. Positions are to be filled in the fields of transportation, mining engineering, mining, ore processing, metallurgy and maintenance. One thing for sure, each and every one of the employees will be taking part in the most important project of the history of Nemaska, which will have an impact worldwide, for the benefit of humanity.



oetins
Operating Engineers Training Institute of Nova Scotia

296 Grey Mountain Road
Falmouth, NS B0P 1L0
Office: (902) 798-5070
Fax: (902) 798-5660
www.OETINS.ca



 **Explor**
Resources Inc. TSX.V: **EXS**

Explor Resources Inc.
15 Gamble St. E., Suite 204
Rouyn Noranda, QC
Canada J9X 3B6

Chris Dupont, President & Director
Tel: (819) 797.4630
Toll Free: 1.800.388.8668
Fax: (819) 797.6050

Explor Resources Inc. is a gold and base metals exploration company with mineral holdings in Ontario, Quebec and Saskatchewan. The company is currently focused on exploration in the Abitibi Greenstone Belt of Ontario and Quebec, where more than 180 M ounces of gold and more than 450 Mt of Cu-Zn ore have been found to date. Explor's total land position in the Abitibi Greenstone Belt is approximately 21,800 hectares. Explor also owns 1,991 hectares of mining claims in Saskatchewan and 250 hectares in New Brunswick.

Information request:
info@explorresources.com www.explorresources.com

Focus Graphite:

Two Québec Graphite Mining Properties to Meet the Technology Demands of a Low Carbon Economy

By Gary Economo

Focus Graphite Inc. remains one of the most advanced junior graphite mining development companies in North America.

Our flagship Lac Knife high purity graphite deposit near Fermont, Quebec is now joined with our Lac Tétépisca Project located in the Côte-Nord district as potential future suppliers of in-demand, next generation high-value technology materials for the burgeoning low carbon economy.

Progress in today's world commodity markets is a challenge for any junior mining company.

But challenging times invite developers to look at the advantages they hold to transition out of the old and into the new sustainable world of carbon-negative economies.

Focus Graphite is blessed with those natural, geographic, scientific and corporate advantages that leave us well positioned strategically to meet the realities of today's clean technology world.

On January 24, 2017, we announced a 26% increase in measured and indicated mineral resources at Lac Knife flake graphite project. It means that we increased actual tonnage from 9.6 million tonnes of graphitic carbon to 12.1 million tonnes following a technical review by AGP Mining Consultants Inc.

Earlier in January, we reported drilling results from our Lac Tétépisca project indicating 102.1 meters of graphitic carbon with an average grade of 10.7% - including 30.2 meters of graphite grading at 16.7% from both infill and extension drilling.

On February 1, 2017, we published metallurgical data from locked cycle floatation testing that showed Lac Tétépisca high-grade attributes achieving 96.2% purity from first stage milled concentrate.

These results indicate Lac Tétépisca is well on its way to becoming the Company's second significant graphite asset.

The significance of the combination of these results is that they strengthen Focus Graphite's commitment to fulfilling two graphite supply agreements with Grafoid Inc.

Some two-thirds of Lac Knife's future production is committed to Grafoid in two definitive, long-term offtake agreements. They are:

Our Graphene Offtake that commits Grafoid to acquire, at its discretion, up to an annual maximum of 1,000 tonnes of high-purity (98.3%) large flake graphite concentrate annually for 10 years. Our Polymer Offtake commits Grafoid to acquire, at its discretion, up to 25,000 tonnes of concentrate grade annually from the Lac Knife Project for 10 years.

Looking ahead, Lac Tétépisca holds the potential to meet our future supply obligations for graphite-based polymers for the automotive and other industries, whereas Lac Knife's high purity concentrate production is planned for clean technology, renewable energy markets that require high quality coated spherical graphite.

In terms of value, our intent is to commence work on a Preliminary Economic Estimate for Lac Tétépisca early this year, as well as revising our Lac Knife PEA to include economic projections and potential market

valuations of our highly purified technology graphite products including coated spherical graphite and expanded graphite for both battery anodes and cathodes respectively.

Focus as a leading graphite producer

Lac Knife's high-grade, high-purity graphite deposit enables Focus to project it holds one of the lowest costs of production. Five successive publications of data support the unique, superior qualities of the Lac Knife natural flake graphite deposit.

On May 27, 2014, Focus published results showing our ability to tailor spherical coated graphite anode materials to the most stringent of customer specifications

On November 25, 2015, the Company reported "zero loss" in long-term anode testing

On February 26, 2015, Focus reported that Lac Knife graphite outperformed both synthetic and commercially available flake graphite in battery tests

On March 31, 2016, that its expanded graphite for CATHODES exhibited twice the conductivity versus both synthetic and



competing sources of natural graphite, and;

On August 8, 2016, the Company announced its in-house developed technology had successfully purified fine flake graphite from 95% to 99.99% purity – a first in the industry.

A critical materials platform

Our technology-oriented business focus aims to capture markets from its participation in the novel, green technology consortium 2GLPlatform – a partnership with Stria Lithium, the owner of the Pontax spodumene property in the James Bay region and Grafoid Inc., a world-leading graphene application developer in a unique clean technology alliance. (www.2glplatform.com)

Focus now holds the in-house developed proprietary technologies for value added graphite products; holds a leading investment position in graphene-related application developments, and; is partnered with the developer of advanced, affordable lithium production technologies.

2GL Platform – with roots in Quebec - was informally established to capture opportunities created by the emerging clean technology revolution.

Our technology vision has steered us through market ups-and-downs during the last six years and, more to the point, through the maturation of business opportunities it has fostered for the emerging low-carbon economy.

Our strategic plan established five guiding principles that shaped our overall development.

They are: to become a leading graphite producer; to play a central role in a critical materials platform; to become a global player; to be able to weather commodity downturns, and; to present investors with a viable, long-term investment opportunity

These five principles have become the centerpiece of Focus's corporate resume.

To be a global player

Strategic partnering is essential if we are to successfully compete on the global stage.

Focus' aim is to secure commercial relationships with the world's two key industrial players - the United States and China. Combined, they account for some 25% of the green economy. We consider the U.S. to be our home market while we consider China to be the key that unlocks our global expansionary goals.

To succeed, Focus brings product and expertise and combines it with a strategic partner's financial resources and market knowledge thus enabling Focus to penetrate foreign markets. Our partner gains access to Focus' technology.

Diversity in technology markets is the Company's firewall against fluctuating commodity cycles. Corporate planning has led to the development of multiple markets for Focus' value-added products and we have invested in future technologies as a ways and means of de-risking all facets of the company's operations.

Provide investors with a long-term investment opportunity

The ability to purify fine flake graphite expands the company's potential to sell substantially most of the graphite extracted from Lac Knife into high-value, high-tech applications instead of approximately 30 percent being sold for lower value industrial applications. And, Focus holds an equity interest in Grafoid

Next generation low carbon economies are critical for a cleaner planet.

We believe our efforts in developing our Quebec-based resources and technology facilities in the Cote Nord region will bring mining diversity, sustainable value-added production and create jobs within the Plan Nord framework.

Gary Economo is President and CEO of Focus Graphite Inc.



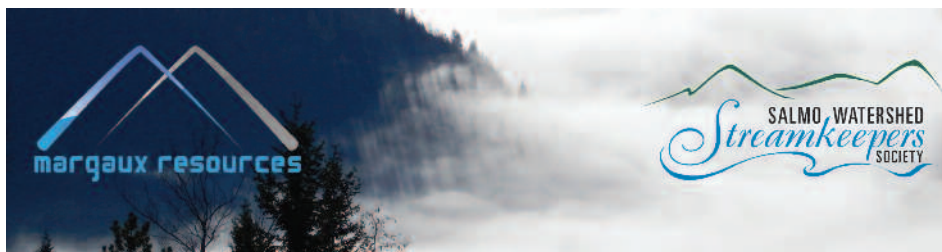
Focus Graphite's Lac Knife, Quebec high-purity flake project is moving towards production from one of the highest technology grade graphite resources in the world.

As a good corporate citizen, we understand that:

The land we exploit is not our own. We have both a moral obligation to protect our environment and a social responsibility to provide jobs, source locally and to be a full-time participant in our community's affairs.

Gary Economo
Chief Executive Officer
Focus Graphite Inc.





When Margaux first moved into the Kootenays, it was to explore the historic Jersey-Emerald lead-zinc and tungsten mine. Although once an important gold district, the gold potential of the Salmo area has been quietly forgotten over time – that has changed recently. Several studies by government and industry have reinforced just how richly mineralized this area is, for gold as well as for lead, zinc, tungsten and other metals.

Margaux had a very successful drill program in 2014, with an astounding 10 metre intercept that graded 25 grams per tonne gold. That was followed up by additional drilling in 2016, which expanded the gold zone. Recognizing the potential of the area, Margaux has increased their land package, acquiring the Sheep Creek Gold Camp, where over 730,000 ounces of gold was historically mined, as well as the Bayonne, Ore Hill, Aspen and Jackpot properties.

“Our basic thinking is that the old timers were smart and worked really hard. They didn’t miss much of what was exposed on surface. They’ve shown us that this is a really prospective area. Now we need to find what they weren’t able to find because of limitations of the day” said Tyler Rice CEO of Margaux.

“We have tools at our disposal that the old timers didn’t and we can build on the historic information by adding new science which will

vector us towards new areas of buried mineralization” said Linda Caron.

Linda Caron has recently joined Margaux Resources as Vice President of Exploration. She has over 30 years of experience in the mineral exploration industry and is well known for her extensive work in Southern British Columbia. Most recently, she was the senior geologist for Kinross on their Grizzly-Greenwood gold project. Linda attended the University of British Columbia, where she obtained a B.A.Sc. in Geological Engineering (Mineral Exploration Option), and the University of Calgary where she received a M.Sc. in Geology. She is a Professional Engineer registered in the Province of British Columbia.

The early prospectors relied on visual methods to decide if a rock had enough mineralization in it to become a mine. Later, there were analytical methods for testing certain commodities, like gold, lead and zinc, but those methods were costly. Now, analytical methods have evolved so that we can measure trace amounts of dozens of different elements in a rock. We’re not interested in mining those elements, but the distribution of them tells us a lot about the mineralizing system and can point us towards the gold, or the lead and zinc. As well the costs associated with analytical work have decreased tremendously.

Margaux Resources Ltd. Makes a difference in the Kootenay Arc

Things Change but in Geological Time They Remain the Same.

There are new geophysical techniques that are able to give us a glimpse of what lies below the surface, without us having to create new disturbance.

These days there are robust computer programs that allow us to layer complex datasets in 3D space for visualization, interpretation and prediction modelling. We have a vast amount of historic data and we’re working hard to get all of that data into modern, digital format so that we can garner the most information possible from these data.

There are piles of historic drill core from past exploration efforts on the properties. Drilling is expensive, with total costs running in the order of \$150-\$200 per metre to drill and analyze the core. We have a team of people methodically going through the old core, collecting new samples and making new observations based on an evolved understanding of the geology of the area. There’s a lot of information we can gain from the existing drill core, for a small fraction of the cost it took to drill it, and without any of the associated land disturbance.

In conjunction with “data mining”, Margaux is actively exploring their properties. The company plans a minimum of 5500 metres of drilling in 2017 to test targets.



margaux resources

1600, 510 - 5th St. SW,
Calgary, AB T2P 3S2
Phone: 403-537-5590

TSX-V:MRL





Perry Bellegarde *AFN National Chief*

(Ottawa, ON) – On the second year anniversary of the Truth and Reconciliation Commission's (TRC) Calls to Action, Assembly of First Nations (AFN) National Chief Perry Bellegarde today said the work of reconciliation must accelerate.

"The past two years has seen a great response from all levels of government and from Canadians who have embraced reconciliation, but change is not happening fast enough," said National Chief Bellegarde. "We are still too far from completing these very important Calls to Action. The socio-economic gap between First Nations and Canadians remains vast. We must work more quickly, because too many First Nations remain without clean drinking water and adequate housing, and too many of our children are taken and poorly served by discriminatory child welfare systems."

The National Chief added, "The framework needed has been clearly identified by the Truth and Reconciliation Commission and promised by the Government of Canada. That is the implementation of the United Nations Declaration on the Rights of Indigenous Peoples. That is our framework for change. Canada's commitment to work with us to co-develop an Indigenous Languages Act to revitalize and preserve the original languages of this land is an important measure of progress. We need to do the same on implementation of the UN Declaration. It's work that should not wait."

On June 2, 2015 the TRC released 94 "calls to action" on priorities for action, including

child welfare, justice, education health and the call for an MMIW Inquiry. The full final report was released December 15, 2015 and completed the work of the TRC which was mandated in the Indian Residential School Settlement Agreement of 2007. The findings followed six years of hearing testimony from more than 7,000 former residential school students from across the country.

The AFN is a party to the Indian Residential Schools Settlement Agreement that led to the creation of the TRC. The federal government has committed to working with First Nations and Indigenous peoples to implement the

Calls to Action. Prime Minister Justin Trudeau has stated that true reconciliation goes beyond the scope of the Calls to Action and has pledged to work with First Nations, Indigenous leaders, provinces and territories and all key parties to design a national engagement strategy for developing and implementing a national reconciliation framework, informed by the TRC's recommendations.

The AFN is the national organization representing First Nations citizens in Canada. Follow AFN on Twitter @AFN_Updates.



Citizen science and genetic testing yield *positive* results

By David Suzuki

Since I started working as a geneticist in the early 1960s, the field has changed considerably. James Watson, Francis Crick and Maurice Wilkins won the 1962 Nobel Prize in physiology or medicine for their discovery of the double helix structure of DNA. Researchers then “cracked” the genetic code, which held promise for fields like health and medicine. It was an exciting time to be working in the lab.

More than 40 years later, in 2003, an international group of scientists sequenced the entire human genetic code. Researchers can now find a gene suspected to cause a disease in a matter of days, a process that took years before the Human Genome Project. As of 2013, more than 2,000 genetic tests were available for human conditions. Forty years ago, I never dreamed scientists would have the knowledge and manipulative capabilities that have become standard practice today.

In a couple of decades, genetics has allowed for systematic inventorying of the world’s biodiversity. Canada’s Centre for Biodiversity Genomics at the University of Guelph has the genomes of more than 265,000 named species identified with

barcodes in its database. The cost to analyze a sample against this free public database is about \$10. Cost reductions and digital communication allow citizen scientists to utilize an enormous storehouse of information.

Young citizen scientists in San Diego were recently able to help compile information about the area’s biodiversity through their local libraries. Kids signed out genetic testing kits — which included sampling vials, tweezers and a return bag — through Catalog of Life @ the Library. They then uploaded photos and locations of their finds using a LifeScanner app or website. It’s part of an effort to collect 4,000 samples of local bug life. After returning kits to the library, the young scientists could go online to see and compare the genetic barcodes of their discoveries.

According to the library, “Only an estimated 20 percent of species on earth have been identified by their DNA barcode.” The San Diego program is part of Barcode of Life, which has the ambitious goal of identifying all life on Earth to help researchers “understand the diversity of species, monitor the health of the environment and the impacts of climate change.” Canada’s Centre for Biodiversity Genomics is doing the genetic sequencing.

People in Canada can also help identify seafood fraud with the LifeScanner service. Genetic testing helps consumers identify the species and possibly origin of fish they buy — important for people who care about sustainability and health and nutrition.

Identifying and tracing seafood has long been a challenge, especially because about 40 per cent of wild-caught seafood is traded internationally — and labelling is often inadequate. Once fish are skinned, cleaned and packaged, it’s not always easy to tell what they are. If you buy something labelled “rockfish” in Canada, it could be one of more

than 100 species. Often, labels don’t indicate whether the fish were caught or processed sustainably. Although the European Union and U.S. require more information on seafood labels than Canada, one study found 41 per cent of U.S. seafood is mislabelled.

A European study found stronger policies combined with public information led to less mislabelling. People in Canada have demanded better legislation to trace seafood products. More than 12,000 people recently sent letters to government asking for better labelling.

SeaChoice (the David Suzuki Foundation is a member) is working with LifeScanner to register 300 people in Canada to test seafood, in part to determine whether labels are accurate. Participants will get testing kits, buy seafood, collect data and images and return samples in a provided envelope. Samples will be analyzed and coded, with results posted online.

With the help of citizen scientists, genetic testing can offer a powerful approach to righting environmental wrongs. Combining crowd-sourced scientific data, public policy reform and consumer activism is already showing positive results. The same approach could work in areas such as testing for antibiotics, pesticide and mercury residues and more.

DNA Day is celebrated in Canada on April 21 and the U.S. on April 25, to commemorate completion of the Human Genome Project in 2003 and discovery of DNA’s double helix in 1953. We’ve come a long way since then, but we still have much to learn. Citizen scientists are helping!

David Suzuki is a scientist, broadcaster, author and co-founder of the David Suzuki Foundation. Written with contributions from David Suzuki Foundation Senior Editor Ian Hanington.

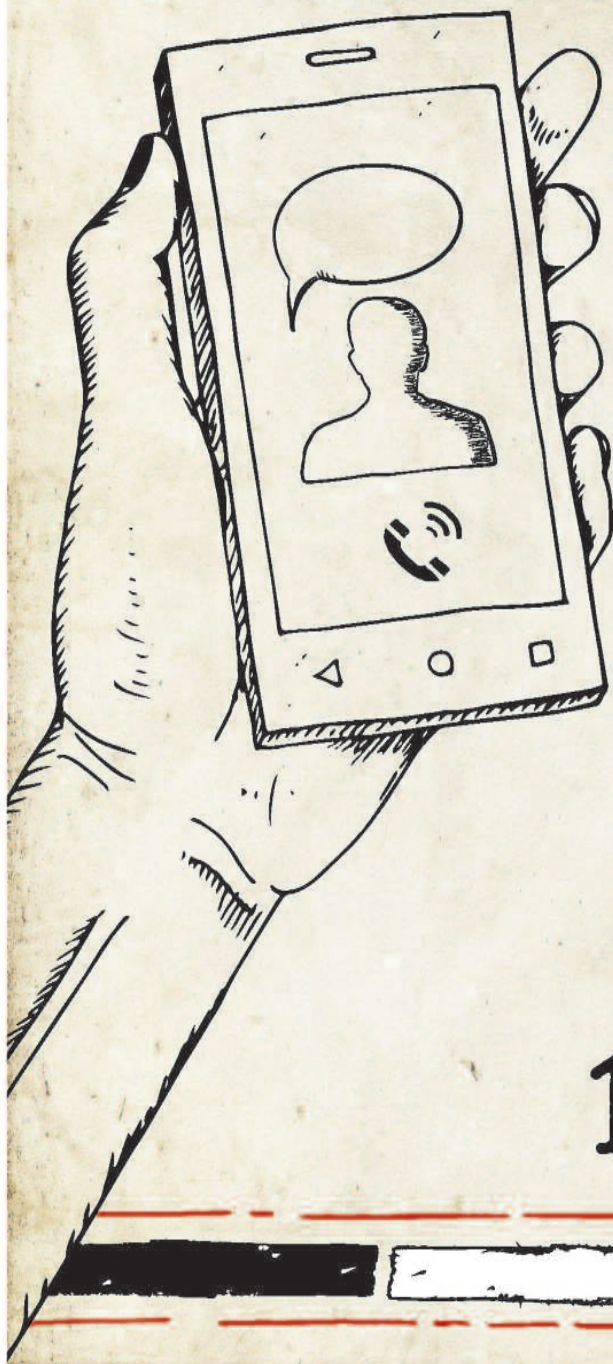
Learn more at www.davidsuzuki.org.



David Suzuki

NEED TO TALK?

Support is a
phone call away.



Call the First Nations and Inuit
Hope for Wellness Help Line

1-855-242-3310

Pub. 170025



Health
Canada

Santé
Canada

Canada

DIABETES CANADA

Food Skills for Families – Making Connections through Food

The high cost of healthy groceries, lack of access to fresh fruits and vegetables, limited cooking skills and nutrition knowledge all impact how well we can eat. Diabetes Canada's Food Skills for Families (FSF) program breaks down barriers and removes some of the stress around healthy eating choices. FSF, developed with extensive input from health-care providers, teaches practical, hands-on cooking skills and makes healthy eating easy, fun and affordable – all while helping people make new friends.

Supporting Aboriginal communities is a priority of FSF. These communities experience some of the highest rates of diabetes in Canada and find it hard to access affordable, healthy foods. A recent partnership between Diabetes Canada and the Congress of Aboriginal Peoples (CCAP) has brought FSF to Atlantic Canada and trained Aboriginal community members to lead the

Aboriginal-focused version of the program, with plans to expand across Canada.

In B.C., where FSF started in 2008 and is funded through a strong partnership between the Ministry of Health and the Province of BC, 2,700 people in Aboriginal communities have participated, and that number continues to grow. “We’re hearing from participants that Food Skills for Families helps them re-think the way they shop for food and make decisions about what they eat,” says Jill Macdonald, a FSF leader. “People tell us they are eager to share the recipes they learn and that they’re eating more fruits and vegetables. Some even tell us that they have given up soda and are drinking more water. These small changes can have a big impact on your overall health and on the health of family members you cook for.”

A key success factor is the Aboriginal-focused curriculum, developed with input

from the Aboriginal community. “We knew the program needed to be culturally appropriate to succeed. We included culturally appropriate foods and traditions based on the community, like storytelling and smudging,” says MacDonald. “The program only works if the community embraces it and that happens when the course reflects the reality of the community.”

For more information about FSF, or to bring it to your community, contact Diabetes Canada at foodskills@diabetes.ca for anyone interested in partnering with Indigenous groups, please contact Rob Russell at the CAP (r.russell@abo-peoples.org). To learn more about diabetes, visit diabetes.ca or call 1-800-BANTING.



Get back to the basics with a new resource

The Canadian Diabetes Association introduces *Just the Basics*, a handy fact sheet to help you and your family eat healthier to prevent or manage diabetes. Find it at diabetes.ca/basics

diabetes.ca | 1-800-BANTING (226-8464)

**DIABETES
CANADA**



Growing Strong Aboriginal Business

Providing Business Loans and Support Services
to Aboriginal Entrepreneurs in Atlantic Canada

TF: 1-888-766-2376 or email: info@ulnooweg.ca

FANCAMP EXPLORATION LTD.



TSX.V: FNC **EXPLORING EASTERN CANADA**



G.D.'s Garage
Autobody & Mechanic

Tel.: (450) 632-9891

Glen Delaronde
Autobody & Mechanical Shop

P.O. Box 298
Kahnawake J0L 1B0



**Voices of Visions
would like to
specially thank
Ascot Resources,
a concerned
resource company**

Lac à Paul Project

Tomorrow's
First Nations
Partner in the
Saguenay-Lac-St-Jean
Region

Follow us !



facebook.com/ariannephosphate



[@Arianne_Phos](https://twitter.com/Arianne_Phos)



linkedin.com/company/arianne-phosphate-inc-tsx-v-dan



www.arianne-inc.com



AURVISTAGOLD
CORPORATION



www.aurvistagold.com

TSX-V:AVA



Jack Jamieson
Vice President,
Aboriginal Services
T.E. Wealth

1-866-430-0537

jjamieson@teic.com

www.tewealth.com/aboriginal/



Northern Sphere Mining Corp.

In the Shadow of a Headframe

Northern Sphere Mining Corp. is a Junior Exploration and Mining Company dedicated to growth through the acquisition and development of mining assets. With an emphasis on near term production opportunities, Northern Sphere seeks to create value for its shareholders while respecting both Community and Environment. Headquartered in Toronto, Ontario, Northern Sphere Mining has a strong project pipeline focusing on Gold, Silver and other metal production. Located in pro-mining jurisdictions, Northern Sphere's assets are located in world class mining camps.

Northern Sphere is currently focused on two of its major assets, the Buckeye Silver Mine in Arizona, USA and the Scadding Gold Project located near Sudbury, Canada. Both these Projects are located "in the Shadow of a Headframe" (areas located near mining operations), generally accepted to be favourable areas to explore, and will be diamond drilled during 2017 anticipating maiden Mineral Resources to be reported in 2018.

In May 2017, Northern Sphere initiated a Geochemical Survey on its Black Diamond property. Located adjacent to Freeport McMoran-BHP's open pit copper project in Miami, Arizona, the Black Diamond Property has multiple prospects including past producing silver mines (McMorris-La Plata Mine, Jumbo Mine, Buckeye Mine, Silver Sevens Mine), along with numerous reported large scale surface silver, gold, and copper prospects.

In June 2017, Northern Sphere contracted Godbe Drilling LLC of Wilcox, Arizona to complete a 4000 ft surface diamond drill program on its patented Buckeye Mine Property located within the Black Diamond Claims. The drill program will test the reported high-grade silver mineralization

within and beyond the historical underground workings.

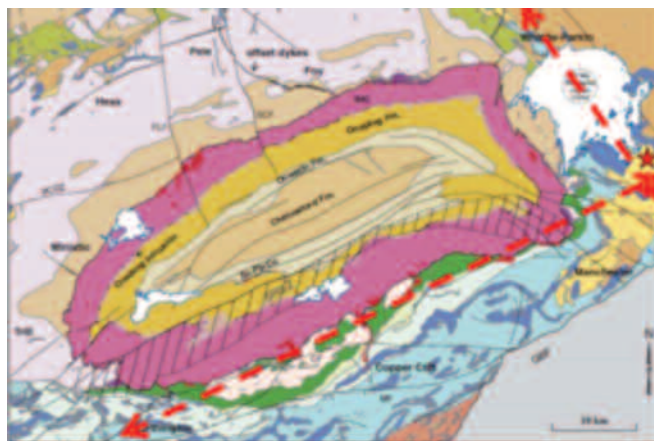
In Canada, Northern Sphere Mining Corp. will be conducting diamond drilling at its' Scadding Gold Project, site of a former underground and open pit gold operation. The site is part of Northern Sphere's 40,000-acre option ground located at the junction of two major structural trends (Figure 2). The primary focus of the Drill Program will be test areas near past mining activities (underground and open pit), and to expand on favourable diamond drill results published by the Property's previous explorer. Past drilling was primarily focused near surface providing Northern Sphere an excellent opportunity to test open ground

below the former Scadding Mine.

Success in the mining and exploration industry combines expertise, good fortune, and hard work, with team building, community support, and mutually beneficial partnerships. At its' Canadian operations, Northern Sphere is committed to building positive relationships with its' First Nation partners, the Wahnapiatae First Nations (WFN). In advance of the planned 2017 Diamond Drilling, Northern Sphere was pleased to share its plans and ideas with WFN and felt fortunate to receive informative and positive feedback. Northern Sphere aspires to continue to support the Wahnapiatae First Nations Community and will strive to build positive relationships with its' members.



*Satellite Map of
Globe-Miami, Arizona*



*Geological map of
the Sudbury Mining
District (after Ames
et al., 2008)
Structural trends
highlighted in red
dashed arrows. The
red star indicates the
location of the former
Scadding gold mine
at the junction of the
structural trends.*



Northern Sphere Mining Corporation

FOCUSED DEVELOPMENT – SUSTAINABLE GROWTH

Northern Sphere's Mission is to create value for its shareholders while respecting Community and the Environment

Define and extract resources on 2 core assets within next 2 yrs

Build Mineral Resource Portfolio

Prioritize "Brownfields Exploration" to support operations

Structure "Greenfields Exploration" to advance assets

Milestones

Q1 2017
 - Buckeye Equip. & Site Buildings Mobilize
 - Scadding Expl Perm.

Q2 2017
 - Buckeye Mine Rehab & Insp.
 - UG Drilling Buckeye Mine
 - Diamond Drilling Scadding Mine

Q3 2017
 - Drilling results Scadding
 - UG Drilling Buckeye

Q4 2017
 - Buckeye Mine ore stockpile
 - Resource Update Scadding - Buckeye

CSE: NSM

US Operations:
 Arizona, Gila County 3,800 acres

- Former Silver Mines**
- Buckeye Mine - Silver Seven Mine
 - McMorris Mine - La Plata Mine

Copper Prospect - Iron Nugget Cu-Fe-Au Property

Silver Prospects - Windmill, Cherry, Flat Mesa

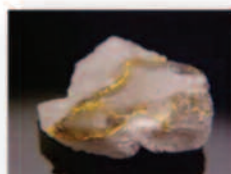


CSE: NSM

Shares Issued:	20,000,000
Market Cap:	\$2.0 million
Year High & Low:	\$0.05 - \$0.12
Tightly held stock by core group:	

CSE: NSM

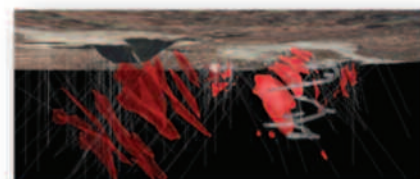
Tel:	(905) 300-8843
Suite 101, 610 Yonge St	
Toronto Ontario M5E 1K3	
Email:	jcarter@northernsphere.com
www.northernsphere.com	



Canada Operations:
 Sudbury District - 40,000 acres

- Former Gold Mines**
- Scadding Mine
 - Alwyn-Porcupine Mine Cu-Au

- Gold Prospects**
- Tecumseh Property
 - East Red Rock
 - Glade Occurrence



Directors & Officers	
John Carter	President, CEO & Director
Sheldon Inwentash	Chairman & Director
Denis Lavolette	Director
Robin Pikely CPA, CA	CFO
Gerry Feldman	Audit, Corp Gov & Director
Bob Leschysen	Director
Steve Gray P.Geo	Vice President



OK2 MINERALS - A GLOBAL MINERAL EXPLORATION COMPANY

OK2 MINERALS

TSX-V: OK



THE CREES OF Waskaganish First Nation
 ᐱᐱᐱᐱᐱᐱᐱᐱ ᐱᐱᐱᐱ ᐱᐱᐱᐱ ᐱᐱᐱᐱᐱᐱᐱᐱ

www.waskaganish.ca

70, Waskaganish Road
 Waskaganish, Quebec
 J0M 1R0

Tel: (819) 895-8650
 Fax: (819) 895-8901

Chris Crozier
 MacEWEN PETROLEUM INC.
 Regional Manager
 613-312-0885 cell

MacEWEN

Tivi Inuit Art Gallery

5205 Airport Road, Kuujjuaq, Nunavik,
 Qc, Canada, J0M 1C0
www.inuitartcanada.ca



Fission
URANIUM CORP.

www.fissionuranium.com

TSX:FCU

**We're dedicated
to making the future
a better place.**

**At Fission, we believe
the discovery of clean,
efficient energy is good
for the environment and
good for Canada.**

For more information, visit us
at www.fissionuranium.com.

Fission Uranium Corp

700-1620 Dickson Ave, Kelowna BC

Toll-free 1.877.868.8140

ir@fissionuranium.com

www.fissionuranium.com

 @FissionUranium

 [fissionuraniumcorp](https://www.linkedin.com/company/fissionuraniumcorp)

 [fissionuraniumcorp](https://www.youtube.com/fissionuraniumcorp)

Patterson Lake South (PLS)
Athabasca Basin, Saskatchewan

Northern Ontario's leading supplier of concrete products and services



Concrete

Ready Mix concrete for Sudbury, Sault Ste. Marie, Thunder Bay and Northern Ontario

Construction

Bagged cement & restoration products for every project

Residential

Landscaping products that will give your home a distinct look

Sand & Gravel

We offer a full range of aggregate products like sand, gravel, and slag

Blocks

Concrete blocks for your residential, commercial or industrial project

Precast

Heavy duty and decorative concrete wall barriers

Sandblasting

Products and equipment for all your sandblasting needs